

# Carr Head Primary School - Knowledge Organiser

Science

Teeth and digestion

Year 4

Spring 2

## Key Knowledge

### The Digestive System

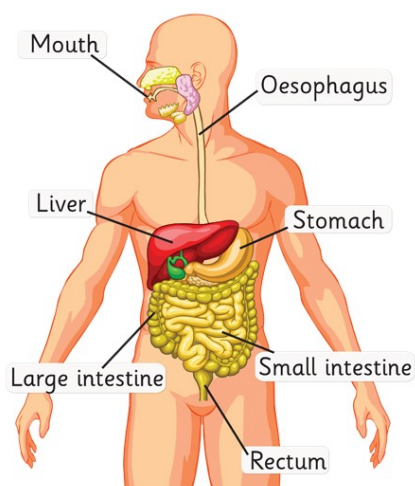
<b>mouth</b>	Food enters the mouth and it is chewed up by the teeth. Saliva also mixes with the food.
<b>oesophagus</b>	When it can be swallowed, food is pushed down the oesophagus into the stomach
<b>stomach</b>	It is here that food mixes with acid and digestive enzymes
<b>small intestine</b>	The mixed food is pushed into the small intestine where the nutrients are absorbed from the food.
<b>large intestine</b>	The left over food moves into here from the small intestine.
<b>rectum</b>	The food minus the nutrients arrives in the rectum. It is turned into faeces and pushed out of the body through the anus.

### Teeth

<b>Teeth and diet</b>	The teeth of an animal are designed to eat different foods depending on the diet of the animal
<b>Human teeth</b>	Humans have 32 teeth in total. They have two sets of teeth in a life time. Milk or baby teeth are replaced by permanent
<b>Care of teeth</b>	Humans are encouraged to visit a dentist at least twice a year to help them maintain healthy teeth.

## Key Vocabulary

<b>canines</b>	teeth that are used for tearing and ripping foods
<b>carnivore</b>	a meat eating animal
<b>digest</b>	break down food so it can be used by the body
<b>enamel</b>	the hard, white substance that forms the outer part of the tooth
<b>herbivore</b>	a plant eating animal
<b>incisors</b>	teeth that are used for biting and cutting
<b>intestine</b>	the tubes in your body through which your food passes when it has left the stomach.
<b>molars</b>	teeth that are used to grind food
<b>oesophagus</b>	tube that runs from the mouth to the stomach
<b>plaque</b>	a substance containing bacteria that forms of the surface of your teeth
<b>pre-molars</b>	teeth that are used to hold and crush food
<b>saliva</b>	the watery liquid that forms in your mouth and helps you to digest food
<b>tooth decay</b>	breakdown of teeth caused by acid made by bacteria
<b>wisdom teeth</b>	third set of molars that are no longer required by humans



### Know how to...

<b>Working</b>	compare the teeth of carnivores and herbivores and offer possible reasons for any differences
	find out what damages teeth and how to look after them
	draw the digestive system and discuss their ideas about it