

Carr Head Primary School - Knowledge Organiser

Science

Plants

Year 1

Spring Term 2

Key Knowledge

Plants

A plant	A living thing that usually grows from the ground.
The main parts of a plant	<ul style="list-style-type: none"> Flowers Leaves Stem Roots
5 common plants to identify	Tulips Daffodils Roses Bluebells Foxgloves

Plants (Trees)

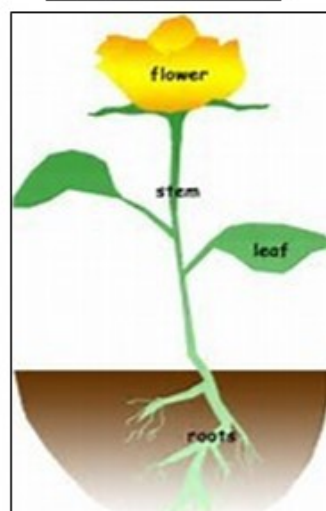
The main parts of a tree	<ul style="list-style-type: none"> Crown Leaves Twigs Branches Trunk Roots
5 common trees to know	Ash Beech Birch Maple Oak

Key Vocabulary

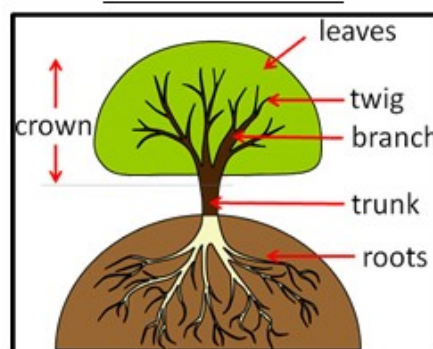
Seed	The part of a flowering plant that can develop into a new plant.
Evergreen	A plant or tree that keeps its leaves all year.
Deciduous	A tree that loses its leaves in Autumn and grows new ones in Spring.

Diagrams and Symbols

The Structure of a Plant



The Structure of a Tree



Know how to...

Working Scientifically

Observing and recording, with some accuracy, the growth of a variety of plants as they **change over time** from a seed or bulb, or **observing** similar plants at different stages of growth

Setting up a comparative test to show that plants need light and water to stay healthy.